

Scan / Enhance / File / Share

Compact, flexible, full color, E/A0 scanning

Fully featured, convenience

Large Format Scanner

**More than just great value**

SD One+ packs a huge amount of value into its lightweight 24" or 36" size. Easy to use, with fully featured software, plus a control panel directly on the scanner.

Save time and money

Must have office scanner at a very attractive price. Scan your oversized maps, engineering and construction drawings in-house with SD One+ to save space, time and money.

Copy, share and collaborate

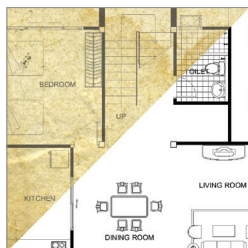
With unmatched ease of use and the highest possible accuracy, you can trust SD One+ on even the most complex projects.

Capture all your document types

Scan and document all your architectural, engineering and construction plans in standard file formats directly into your project folders.



Flexible control panel for easy handling



Improve your originals



Choose your SD One+



	SD One+ 24	SD One+ 36
Maximum Scan Width	24 inch (610 mm)	36 inch (914 mm)
Maximum Media Width	26.6 inch (676 mm)	38 inch (965 mm)
Weight	18.7 lbs. (8.5 kg)	24.9 lbs. (11.3 kg)
Dimensions	32.2x9.1x4.9 inch (818x231x124 mm)	45.6x9.1x4.9 inch (1158x231x124 mm)
Scan speed (color and monochrome)¹⁾		
150 dpi		3.8 inch per second
300 dpi		1.9 inch per second
600 dpi		1.0 inch per second
Other specifications		
Optical Resolution		600 dpi
Maximum Resolution		9600 dpi
Total number of Pixels		15552 pixels
Context CFR ²⁾		Yes
Maximum Media Thickness		0.03 inch / 0.75mm
Accuracy		0.1% +/- 1 pixel
Data Capture (color/mono)		48-bit
Color Space		sRGB (24 bit) / Grayscale (8 bit) / Monochrome (1 bit)
Connectivity		USB with xDTR
Network workflow		Pull / Push
ENERGY STAR [®] certified		Yes
Software ³⁾		AutoCAD [®] , Microstation [™] , ArcGIS [™] and all other CAD, GIS and other image editing / storage applications
Operating System		64-bit Windows 8, Windows 7 and Vista
Scanning Software		Nextimage FREE file scanning software included with the scanner. Easy creation of TIFF, JPG, PDF and PDF/A files and integration with Cloud destinations like Google Drive, Box.com, Dropbox, etc.
Upgradable scanning software		Nextimage Scan+Archive. Full featured scanning software incl. multipage (PDF, PDF/A and TIFF) and full image quality controls
		Nextimage Repro. Full featured scanning / copying software incl. built-in printer drivers and full color control
Additional file formats ⁴⁾		PDF, PDF/A and TIFF Multipage, DWF, CALS, BMP, JPEG-2000(JP2), JPEG2000 Extended(JPX), TIFF-G3, others
Nextimage TWAIN		64-bit TWAIN application driver included for use with EDM and other imaging software
Power Consumption (Ready / Power Save / Scanning)		5.5/0.5/14 W, ENERGY STAR [®] Certified
Power Requirements		External power supply 100-240 VAC, 60/50 Hz, 16 W
Certification and Warranty		
Safety		IEC 60950. Certificates: cUL (USA and Canada), CE (Europe), CCC (China), PSE (Japan), EAC (Russia, Kazakhstan, Belarus), KC (Korea), BSMI (Taiwan) and UKR (Ukraine)
Electro Magnetic Compatibility (EMC)		Compliant with Class A requirements, including FCC rules (USA), ICES (Canada), EMC Directive (EU), CCC (China), VCCI (Japan), EAC (Russia, Kazakhstan, Belarus), KC (Korea), BSMI (Taiwan), UKR (Ukraine) and BIS (India)
Environmental		ENERGY STAR [®] Certified, EuP (EU), WEEE (EU), RoHS (EU) and REACH (EU)
Country of Origin		Designed and engineered in Denmark, manufactured in China
Warranty		2-year warranty and fast, easy parts replacement
In the box		Scanner (24" or 36" model), 2 m USB cable, external power supply, basic scanning software (Nextimage FREE), installation software and user guides in PDF on USB flash drive, installation guide, calibration poster, calibration sheet and cleaning cloth.

- 1) Scanning speeds based on 24" wide document. Context recommends Intel Core Duo, Core 2 Duo, or better processors, 2GB RAM, Hi-speed USB2. Speed tests performed using Nextimage software, PC with Intel Core i5-2500 Quad processor, 8GB RAM, Hi-speed USB2, 7200rpm HDD, Windows 7 64-bit Ultimate.
- 2) Color Fringe Removal (CFR) is a Context Patent. Color Fringing is a natural consequence of CIS technology sequentially flashing R-G-B. Thanks to Context innovative thinking, CFR will remove this problem with advanced filter technology.
- 3) Context applications create industry standard raster file formats which can be used in any CAD or GIS application.
- 4) Requires optional Nextimage Scan+Archive or Repro software

All trademarks remain the property of their respective holders, and are used only to directly describe the product being provided. Their use in no way indicates any relationship between Context and the holders of the said trademarks.

Accessories:



Optional
stand for easy movement and storage.



Optional
Nextimage Scan+Archive
More file formats and improved image controls.

Nextimage Repro
Full featured scanning, copying and color controls.



Scan



Update



Save



Print



Context Copenhagen
Denmark + HQ
Phone: +45 4814 1122
info@context.com

Context Americas
Virginia, USA
Phone: +1 (703) 964 9850
salesamericas@context.com

Context Japan & Asia
Yokohama
Phone: +81 3 3669 5515
info-japan@context.com

Context solutions are compatible with all leading large format printers. Go to www.context.com and see the full list of printers.



SD One nominated

MONSEN ENGINEERING
800-821-0672

